

Winster Parish Council Mowing Specification

You are invited to provide a fixed, lump sum price for the following mowing work at Winster. Please submit evidence of your public liability insurance with your quotation. If you are successful, you will be asked to supply appropriate risk assessments for the work. Please return your price to clerk@winsterparishcouncil.gov.uk by Friday 1st March 2024. If you have any questions, please contact me.

2024

- As far as is reasonably practicable, the contractor must provide dates for the mowing events at least 3 days in advance, so that local residents can be informed
- Mow mid/late March of all areas – No cut and collect of this cut initially, although this may become an option if contractors/organisations with the appropriate specialist equipment can be sought
- Maintain buffer strips on boundaries, visibility splays, playground and verges throughout the grass growing season, mowing these areas once a month for 5 months from Late April to Late August mid-September on the common, the griffin, bank top and town meir, Ore House and verge to Miners Standard. (see specific plans below)
- Cut and collect the long grass from the common, the griffin, bank top and town meir in mid to late July. All grass to be removed from site and by preference there should be no bailing. If baling the grass is essential for removal, bales must be wrapped in the minimum amount of plastic possible. N.B it is highly likely that the grass will be unfit for animal consumption due to the presence of mole hill soil. All grass must be disposed of properly and evidence of this provided to the parish council on completion of the work
- Scarify some bare patches on the common, the griffin, bank top and town meir for the parish council to seed with yellow rattle and green hay or wildflower seed in August/September (Discuss with Environment Working Group)
- Cut Woodhouse Lane late July to August – No cut and collect

Specific proposals for each area

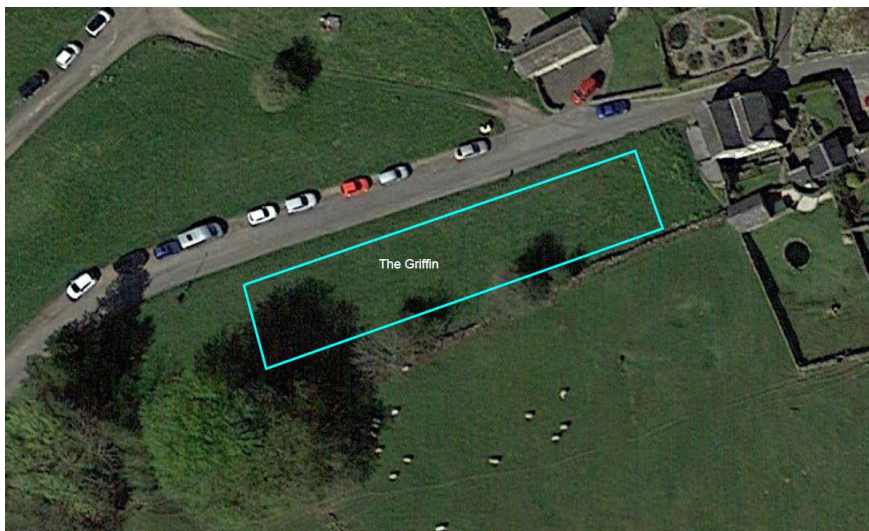
The following plans show the areas for required maintenance as listed above and more detail is provided for each specific area.

The Common



Following an initial full mow in mid late March, a 1-2m verge will be maintained around the common grassed areas and a 4-5m buffer will be maintained on the boundary with adjacent properties, throughout the growing season. The verges will also be cut at the same time as the cut and collect in mid-July.

The Griffin



Following an initial full mow in mid late March, a 1-2m verge will be maintained around the Griffin including the verge from the front of the car park to the playground, and a 4-5m buffer will be maintained on the boundary with adjacent properties which will also keep the footpath to Wyntor Rocks maintained. The verges will also be cut at the same time as the cut and collect in mid-July.

Bank Top



Following an initial full mow in mid late March, a 1-2m verge will be maintained around Bank Top. The verges will also be cut at the same time as the cut and collect in mid-July.

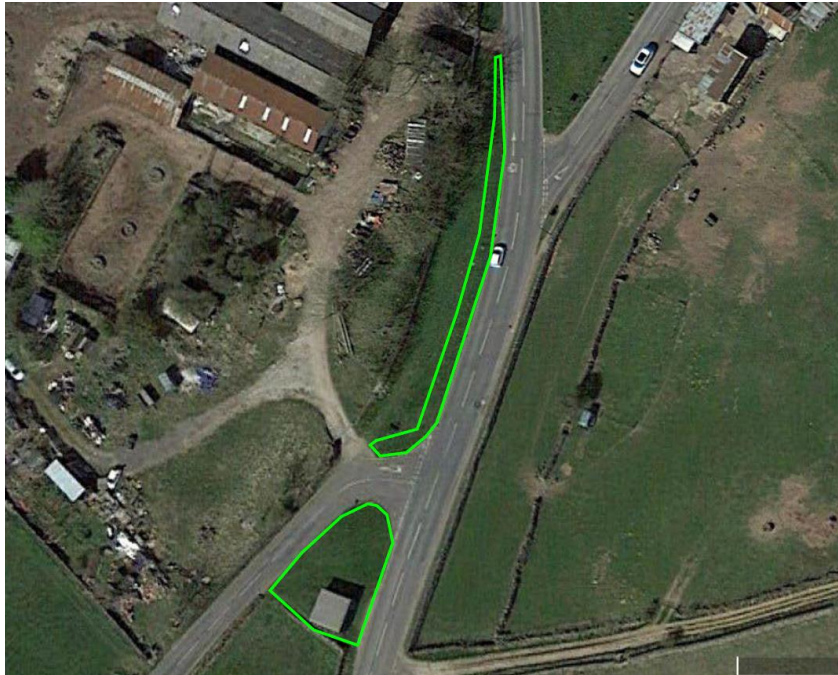
Town Meir



Following an initial full mow in mid late March, a 1-2m verge will be maintained on the roadside boundary of Town Meir. The verges will also be cut at the same time as the cut and collect in mid-July. The cut and collect must leave a 2m buffer around the pond

OTHER AREAS TO BE MOWN

Ore House and verge to Miners Standard



These areas will be maintained throughout the growing season mowing these areas once a month for 5 months from Late April to Late August/mid-September.

Woodhouse Lane



The highlighted areas will be mown Late July to August. A 2m buffer strip must be left adjacent to the treed boundaries. The Winstar Pond and Community Orchard Group will continue to

manage the orchard grassland, the area adjacent to the outdoor gym and the area adjacent to the playground.

The above plans are for illustrative purposes only and are not to scale nor should be relied upon to be wholly accurate. The successful contractor will attend a pre start meeting to finalise arrangements.

Clerk to Winter Parish Council

Winster Parish Council

clerk@winsterparishcouncil.gov.uk